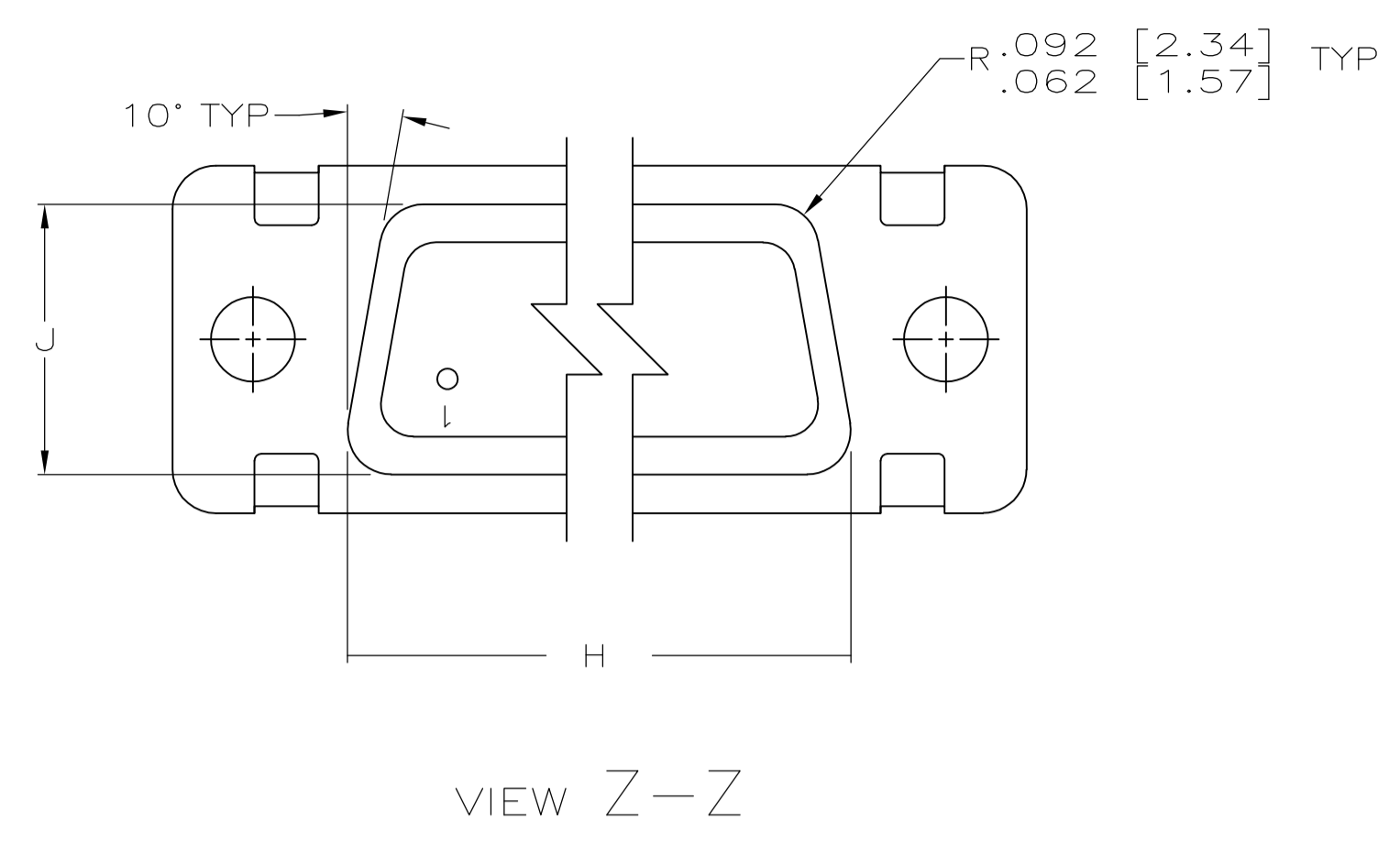
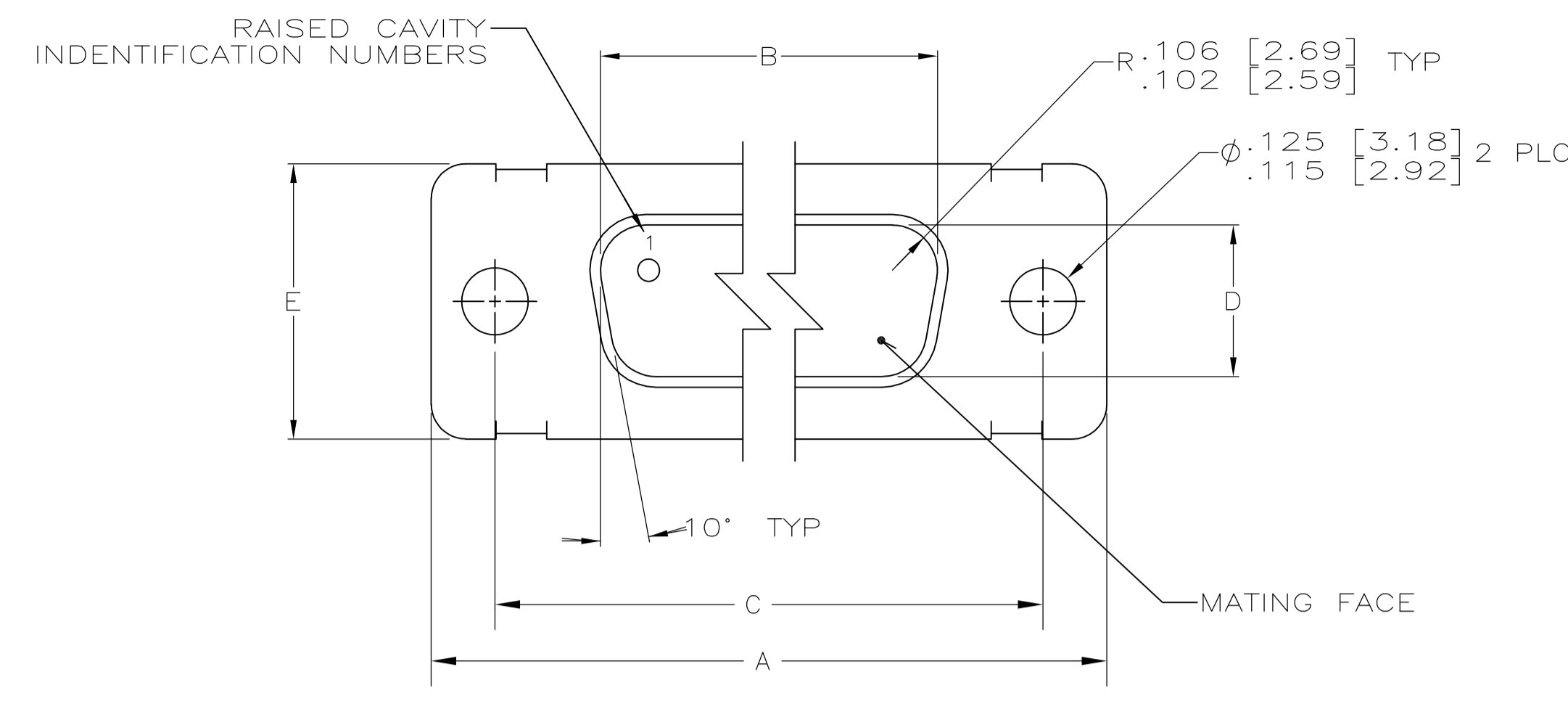
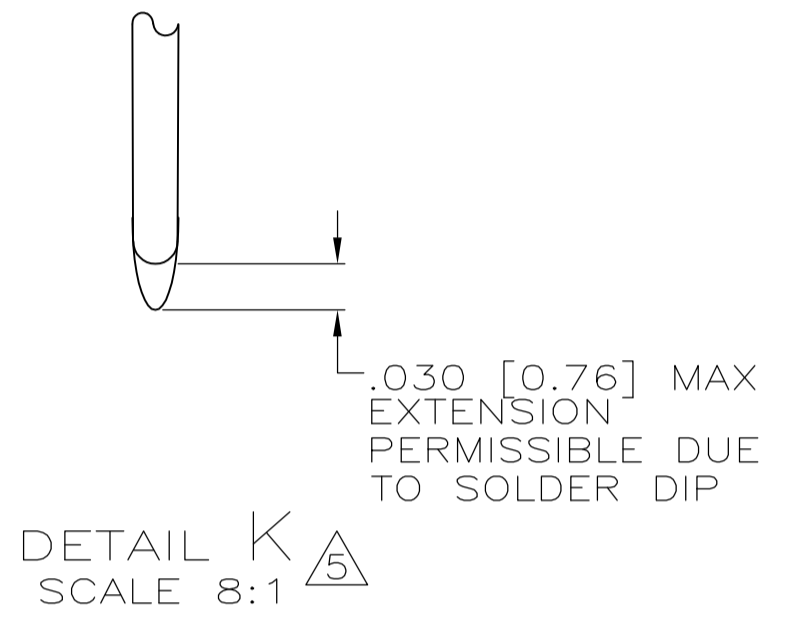
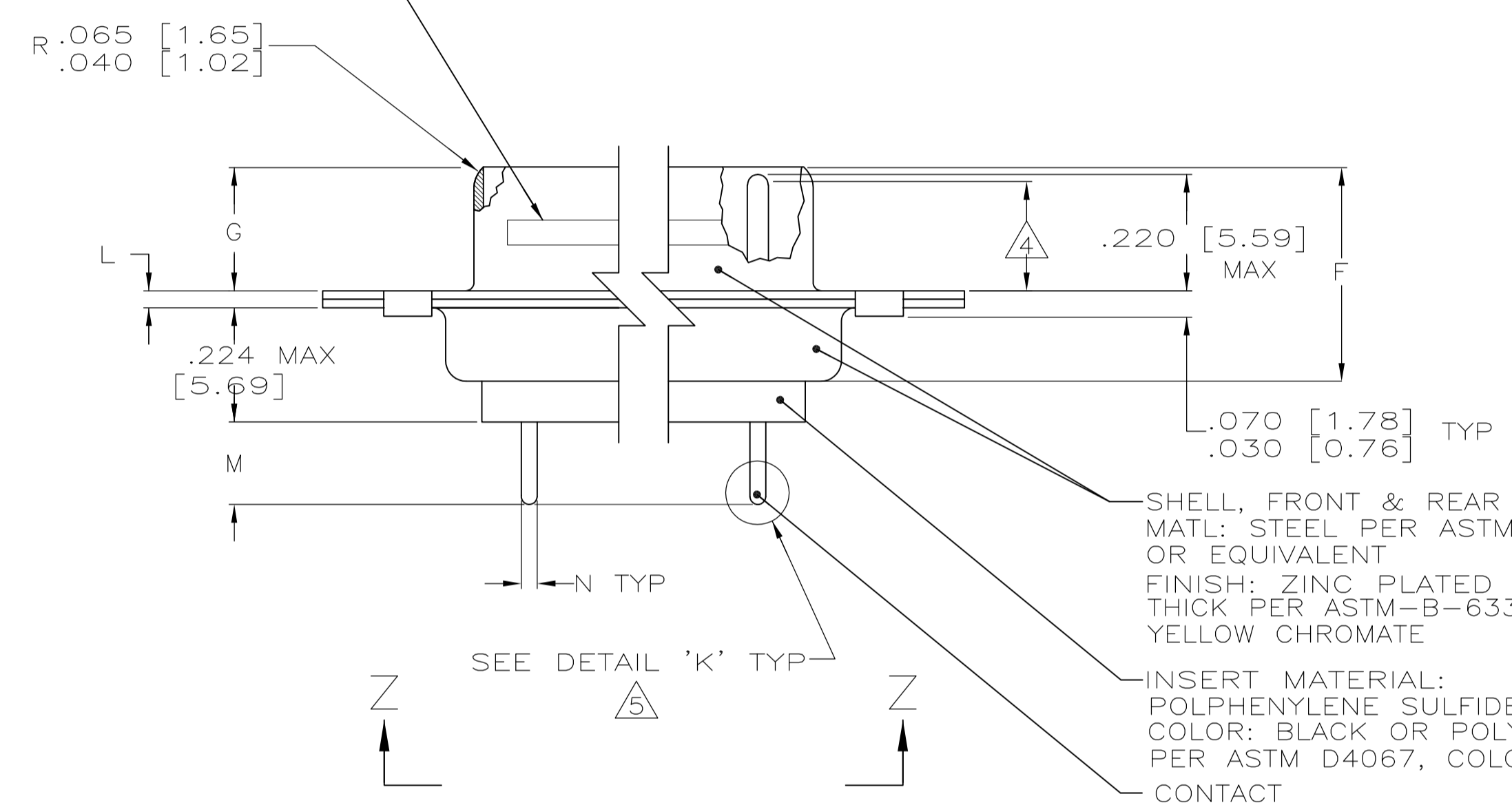


REVISONS		DATE	BY	APPV
D	REV PER ECO-07-017102	20SEP07	PY	BW



3 MARK AMP, AMP PART NO AND DATE CODE, FAR SIDE.

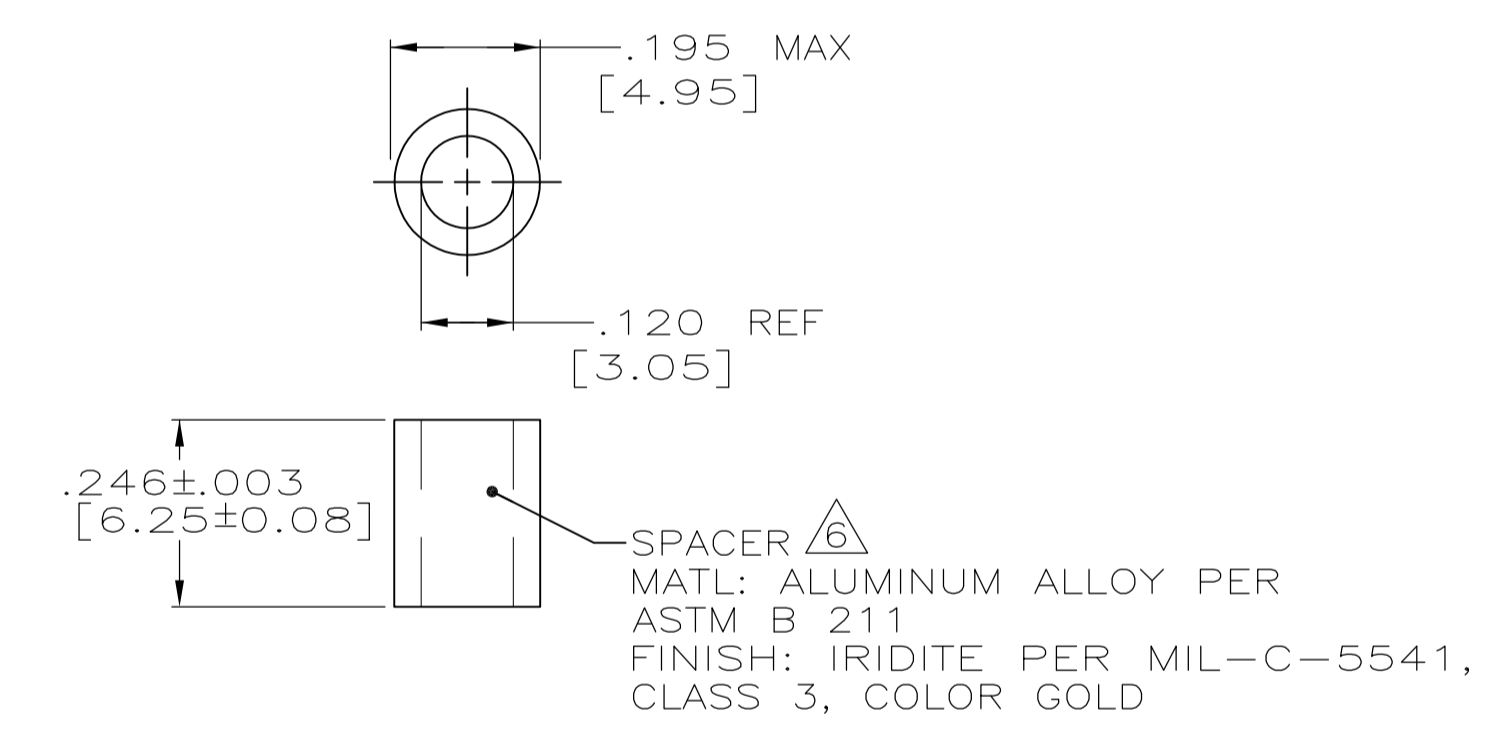


SHELL, FRONT & REAR  
 MATL: STEEL PER ASTM A 109 OR EQUIVALENT  
 FINISH: ZINC PLATED .000200 [0.0051] MIN THICK PER ASTM-B-633  
 YELLOW CHROMATE

INSERT MATERIAL:  
 POLYPHENYLENE SULFIDE (PPS) PER MIL-M-24519, TYPE:GST-40F  
 COLOR: BLACK OR POLYESTER PER MIL-M-24519, TYPE:GLCP-30F OR PPS PER ASTM D4067, COLOR, BLACK

CONTACT  
 MATL: BRASS ALLOY OR BERYLLIUM COPPER 173  
 FINISH: GOLD PER MIL-G-45204, TYPE II, GRADE C, CLASS 1 OVER NICKEL PER QQ-N-290, .000050 MIN THICK

- 1 SEE SHEET 2 FOR RECOMMENDED P.C. BOARD LAYOUT. TRUE POSITION TOLERANCE FOR P.C. BOARD LAYOUT IS .010 [0.25] AT MAX MATERIAL CONDITION. SUGGESTED BOARD THICKNESS IS .125 [3.18]
- 2 THE CONNECTORS DESCRIBED IN THIS DOCUMENT MATE WITH ANY RECEPTACLE CONNECTOR WITH THE SAME INSERT ARRANGEMENT.
- 3 MARKED WITH .047 [1.19]-.062 [1.57] HIGH CHARACTERS. FAR SIDE REFERS TO THE WIDE SIDE OF THE KEYSTONE. NEAR SIDE REFERS TO THE NARROW SIDE OF THE KEYSTONE. IF THE FRONT SHELL IS TOO SMALL FOR "AMP", AMP PART NUMBER AND DATE CODE, THEN SPLIT AS FOLLOWS:  
 A. AMP PART NUMBER ON REAR SHELL, NEAR SIDE.  
 B. "AMP" AND DATE CODE ON FRONT SHELL, NEAR SIDE.
- 4 REQUIREMENT FOR FULL PIN DIAMETER EXTENSION:  
 .159 [4.04] MIN, SHELL SIZES 1 AND 2.  
 .150 [3.81] MIN, SHELL SIZES 3 AND 4.
- 5 SOLDER DIPPED PER MIL-STD-2000 COMPOSITION Sn63 CONFORMING TO QQ-S-571. COVERAGE SHALL BE COMPLETE TO A DISTANCE .020 [0.51] MAX FROM INSERT ASSEMBLY.
- 6 SPACERS (QTY 2) ARE SUPPLIED WITH CONNECTORS (NOT ATTACHED TO THE CONNECTOR).
- 7. DIMENSIONS APPLY PRIOR TO SOLDER DIPPING.



.033	[0.84]	.208	[5.28]	.049	[1.24]	.544	[13.82]	2.188	[55.58]	.236	[5.99]	.436	[11.07]	.620	[15.75]	.446	[11.33]	2.411	[61.24]	2.084	[52.93]	2.650	[67.31]	MS18277-1	50	5	1-1218379-0	1-1218379-0
.027	[0.69]	.168	[4.27]	.029	[0.74]	.524	[13.31]	2.168	[55.07]	.224	[5.69]	.416	[10.57]	.590	[14.99]	.436	[11.07]	2.401	[60.99]	2.074	[52.68]	2.620	[66.55]	MS18276-1	37	4	1218379-9	1218379-9
.033	[0.84]	.208	[5.28]	.049	[1.24]	.544	[13.82]	2.188	[55.58]	.236	[5.99]	.436	[11.07]	.620	[15.75]	.446	[11.33]	2.411	[61.24]	2.084	[52.93]	2.650	[67.31]	MS18275-1	25	3	1218378-8	1218378-8
.027	[0.69]	.168	[4.27]	.029	[0.74]	.524	[13.31]	2.168	[55.07]	.224	[5.69]	.416	[10.57]	.590	[14.99]	.436	[11.07]	2.401	[60.99]	2.074	[52.68]	2.620	[66.55]	MS18274-1	15	2	1218379-7	1218379-7
.033	[0.84]	.208	[5.28]	.049	[1.24]	.544	[13.82]	2.188	[55.58]	.236	[5.99]	.436	[11.07]	.620	[15.75]	.446	[11.33]	2.411	[61.24]	2.084	[52.93]	2.650	[67.31]	MS18273-1	9	1	1218379-6	1218379-6
.027	[0.69]	.168	[4.27]	.029	[0.74]	.524	[13.31]	2.168	[55.07]	.224	[5.69]	.416	[10.57]	.590	[14.99]	.436	[11.07]	2.401	[60.99]	2.074	[52.68]	2.620	[66.55]	MS18277-1	50	5	1218379-5	1218379-5
.033	[0.84]	.208	[5.28]	.049	[1.24]	.544	[13.82]	2.188	[55.58]	.236	[5.99]	.436	[11.07]	.620	[15.75]	.446	[11.33]	2.411	[61.24]	2.084	[52.93]	2.650	[67.31]	MS18276-1	37	4	1218379-4	1218379-4
.027	[0.69]	.168	[4.27]	.029	[0.74]	.524	[13.31]	2.168	[55.07]	.224	[5.69]	.416	[10.57]	.590	[14.99]	.436	[11.07]	2.401	[60.99]	2.074	[52.68]	2.620	[66.55]	MS18275-1	25	3	1218379-3	1218379-3
.033	[0.84]	.208	[5.28]	.049	[1.24]	.544	[13.82]	2.188	[55.58]	.236	[5.99]	.436	[11.07]	.620	[15.75]	.446	[11.33]	2.411	[61.24]	2.084	[52.93]	2.650	[67.31]	MS18274-1	15	2	1218379-2	1218379-2
.027	[0.69]	.168	[4.27]	.029	[0.74]	.524	[13.31]	2.168	[55.07]	.224	[5.69]	.416	[10.57]	.590	[14.99]	.436	[11.07]	2.401	[60.99]	2.074	[52.68]	2.620	[66.55]	MS18273-1	9	1	1218379-1	1218379-1
.033	[0.84]	.208	[5.28]	.049	[1.24]	.544	[13.82]	2.188	[55.58]	.236	[5.99]	.436	[11.07]	.620	[15.75]	.446	[11.33]	2.411	[61.24]	2.084	[52.93]	2.650	[67.31]	MS18277-1	50	5	1218379-5	1218379-5
.027	[0.69]	.168	[4.27]	.029	[0.74]	.524	[13.31]	2.168	[55.07]	.224	[5.69]	.416	[10.57]	.590	[14.99]	.436	[11.07]	2.401	[60.99]	2.074	[52.68]	2.620	[66.55]	MS18276-1	37	4	1218379-4	1218379-4
.033	[0.84]	.208	[5.28]	.049	[1.24]	.544	[13.82]	2.188	[55.58]	.236	[5.99]	.436	[11.07]	.620	[15.75]	.446	[11.33]	2.411	[61.24]	2.084	[52.93]	2.650	[67.31]	MS18275-1	25	3	1218379-3	1218379-3
.027	[0.69]	.168	[4.27]	.029	[0.74]	.524	[13.31]	2.168	[55.07]	.224	[5.69]	.416	[10.57]	.590	[14.99]	.436	[11.07]	2.401	[60.99]	2.074	[52.68]	2.620	[66.55]	MS18274-1	15	2	1218379-2	1218379-2
.033	[0.84]	.208	[5.28]	.049	[1.24]	.544	[13.82]	2.188	[55.58]	.236	[5.99]	.436	[11.07]	.620	[15.75]	.446	[11.33]	2.411	[61.24]	2.084	[52.93]	2.650	[67.31]	MS18273-1	9	1	1218379-1	1218379-1
.027	[0.69]	.168	[4.27]	.029	[0.74]	.524	[13.31]	2.168	[55.07]	.224	[5.69]	.416	[10.57]	.590	[14.99]	.436	[11.07]	2.401	[60.99]	2.074	[52.68]	2.620	[66.55]	MS18277-1	50	5	1218379-5	1218379-5
.033	[0.84]	.208	[5.28]	.049	[1.24]	.544	[13.82]	2.188	[55.58]	.236	[5.99]	.436	[11.07]	.620	[15.75]	.446	[11.33]	2.411	[61.24]	2.084	[52.93]	2.650	[67.31]	MS18276-1	37	4	1218379-4	1218379-4
.027	[0.69]	.168	[4.27]	.029	[0.74]	.524	[13.31]	2.168	[55.07]	.224	[5.69]	.416	[10.57]	.590	[14.99]	.436	[11.07]	2.401	[60.99]	2.074	[52.68]	2.620	[66.55]	MS18275-1	25	3	1218379-3	1218379-3
.033	[0.84]	.208	[5.28]	.049	[1.24]	.544	[13.82]	2.188	[55.58]	.236	[5.99]	.436	[11.07]	.620	[15.75]	.446	[11.33]	2.411	[61.24]	2.084	[52.93]	2.650	[67.31]	MS18274-1	15	2	1218379-2	1218379-2
.027	[0.69]	.168	[4.27]	.029	[0.74]	.524	[13.31]	2.168	[55.07]	.224	[5.69]	.416	[10.57]	.590	[14.99]	.436	[11.07]	2.401	[60.99]	2.074	[52.68]	2.620	[66.55]	MS18273-1	9	1	1218379-1	1218379-1

THIS DRAWING IS A CONTROLLED DOCUMENT.

APPROVED: C.C. THOMAS, 9-16-99  
 CHK: H. WYNKOOP, 9-21-99  
 NAME: H. WYNKOOP, 9-21-99

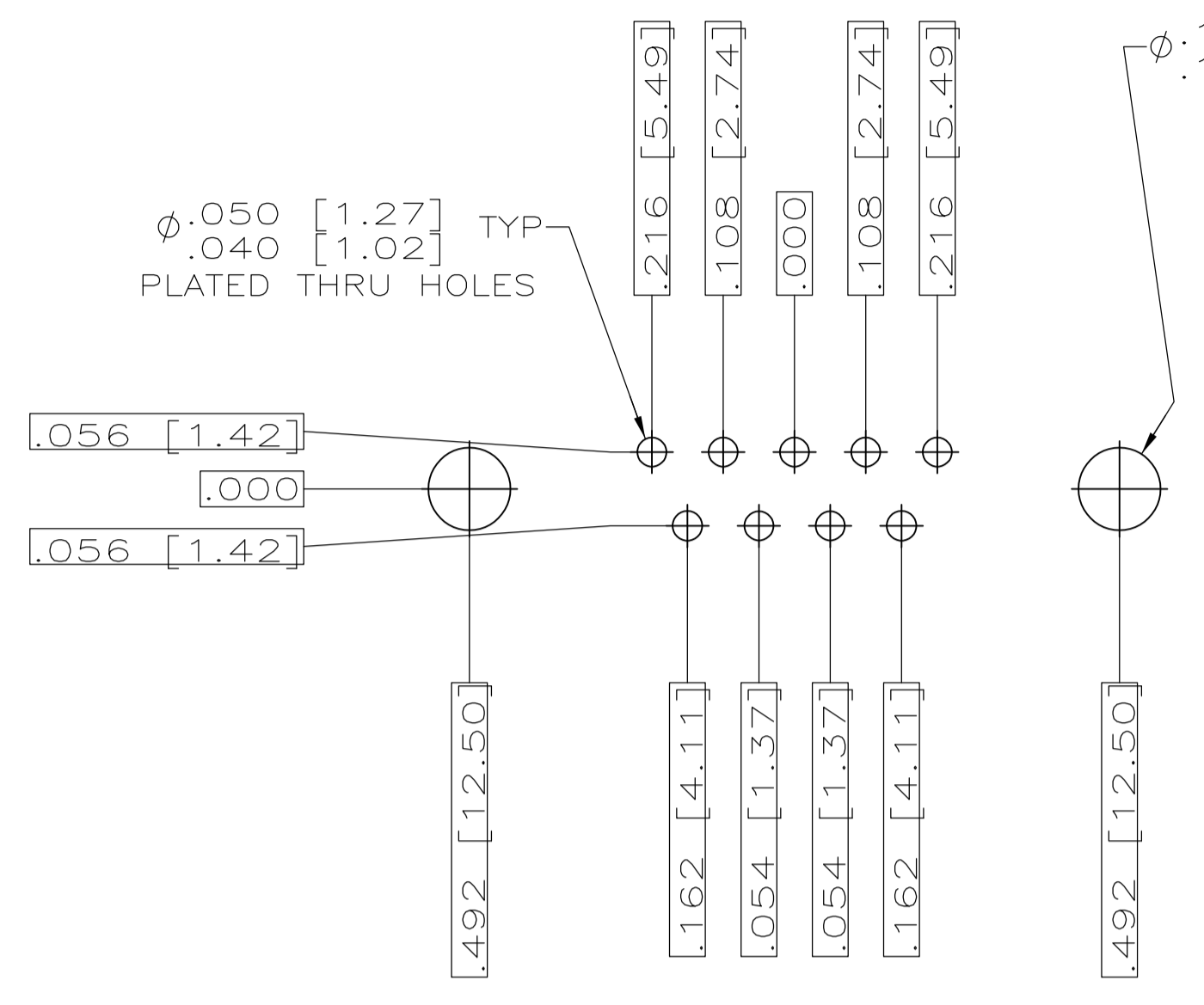
TOLERANCES UNLESS OTHERWISE SPECIFIED:  
 0 PLC ± .005  
 1 PLC ± .004  
 2 PLC ± .003  
 3 PLC ± .002  
 4 PLC ± .001  
 ANGLES ± .5°

MATERIAL: SEE CALLOUTS  
 FINISH: SEE CALLOUTS

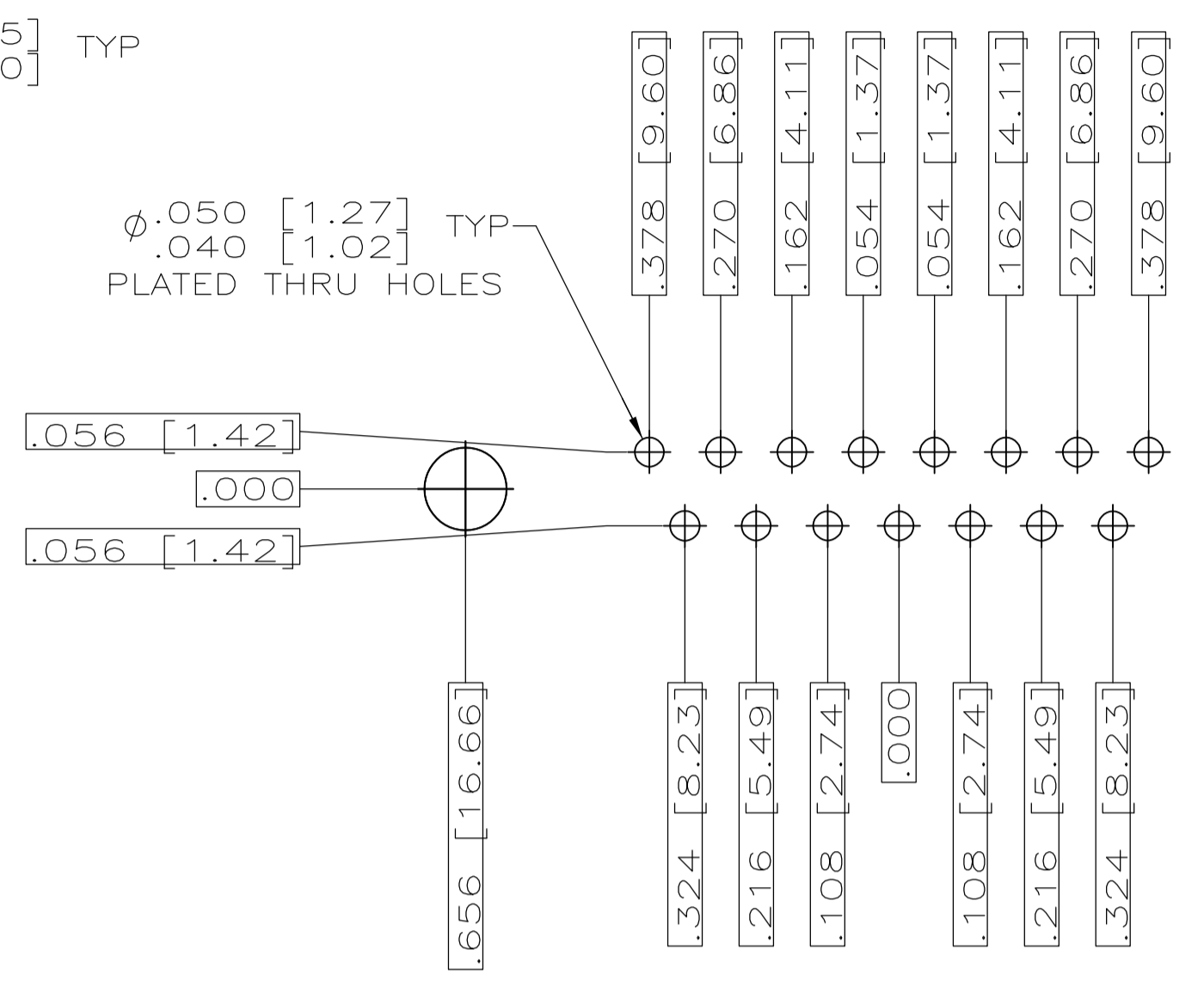
WEIGHT: —  
 SIZE: A1  
 CUSTOMER DRAWING: 00779  
 SCALE: 4:1  
 SHEET: 1 OF 2  
 REV: D

Tyco Electronics Corporation  
 Harrisburg, PA 17105-3608

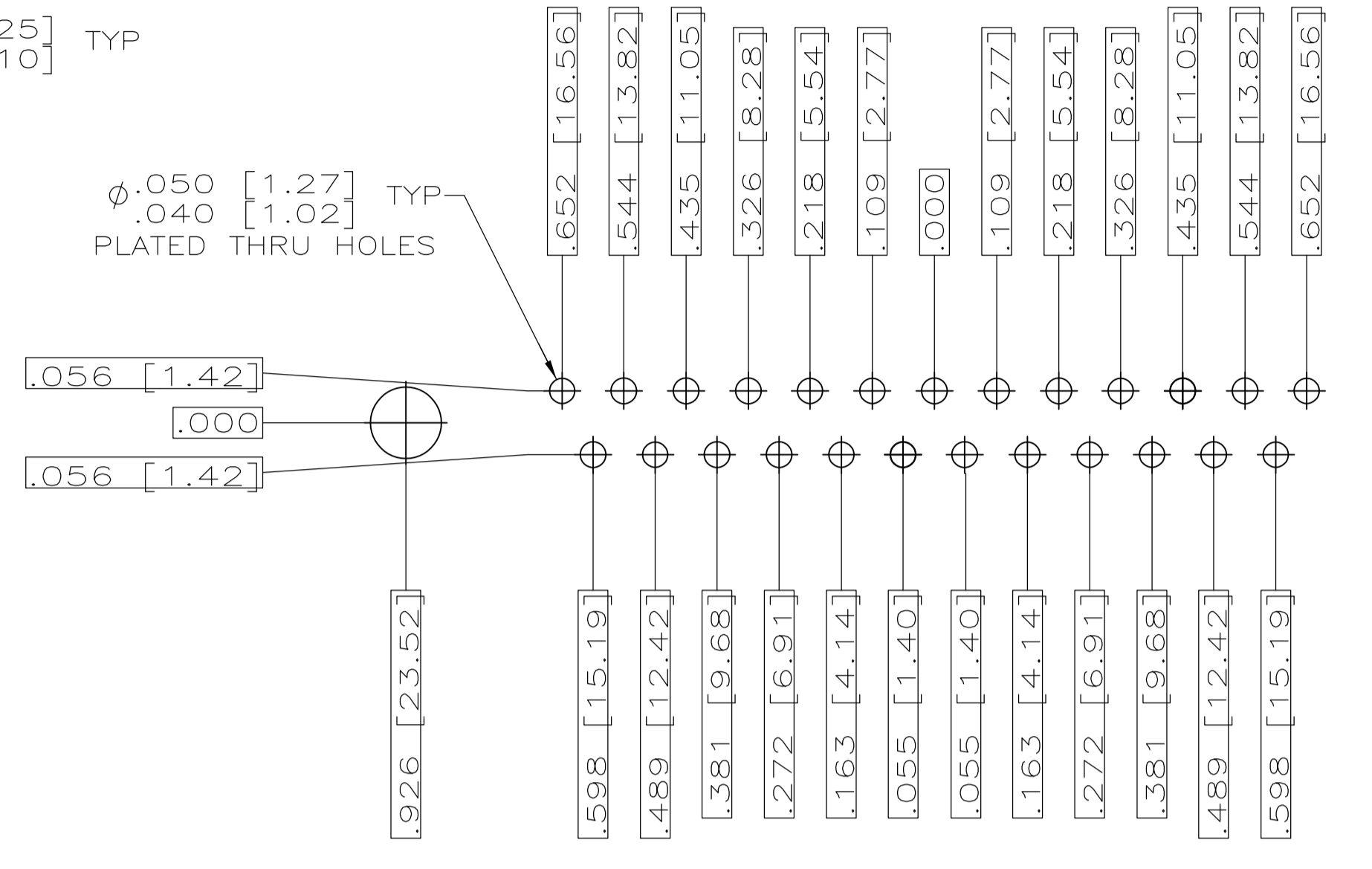
AMPLIMITE PLUG ASSY, LOW PROFILE  
 SIZE 20 POSTED PC BOARD CONTACTS  
 SERIES 109, SIZE 1 THRU 5



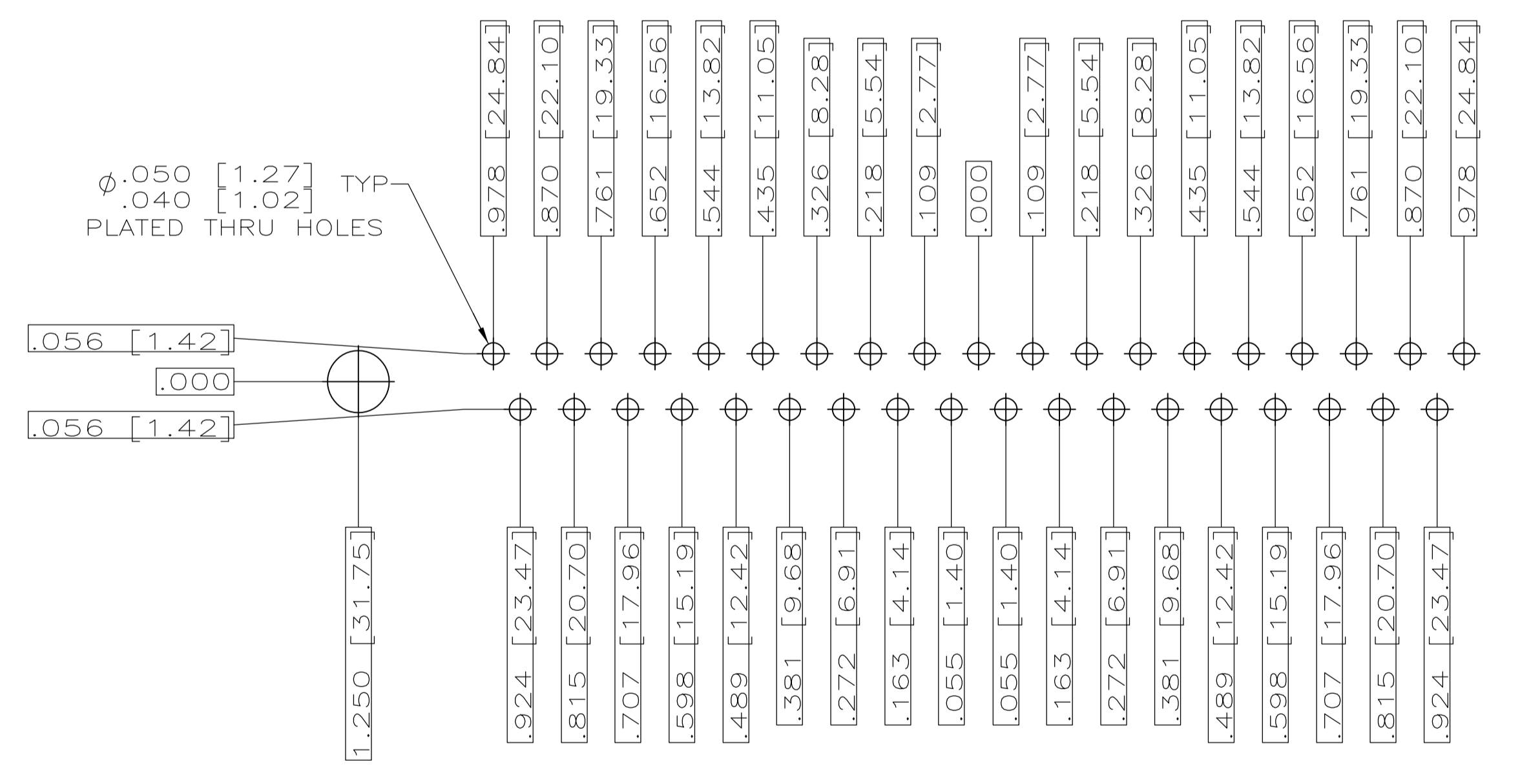
RECOMMENDED P.C. BOARD LAYOUT  
SHELL SIZE 1 (9 POSITION) ⚠



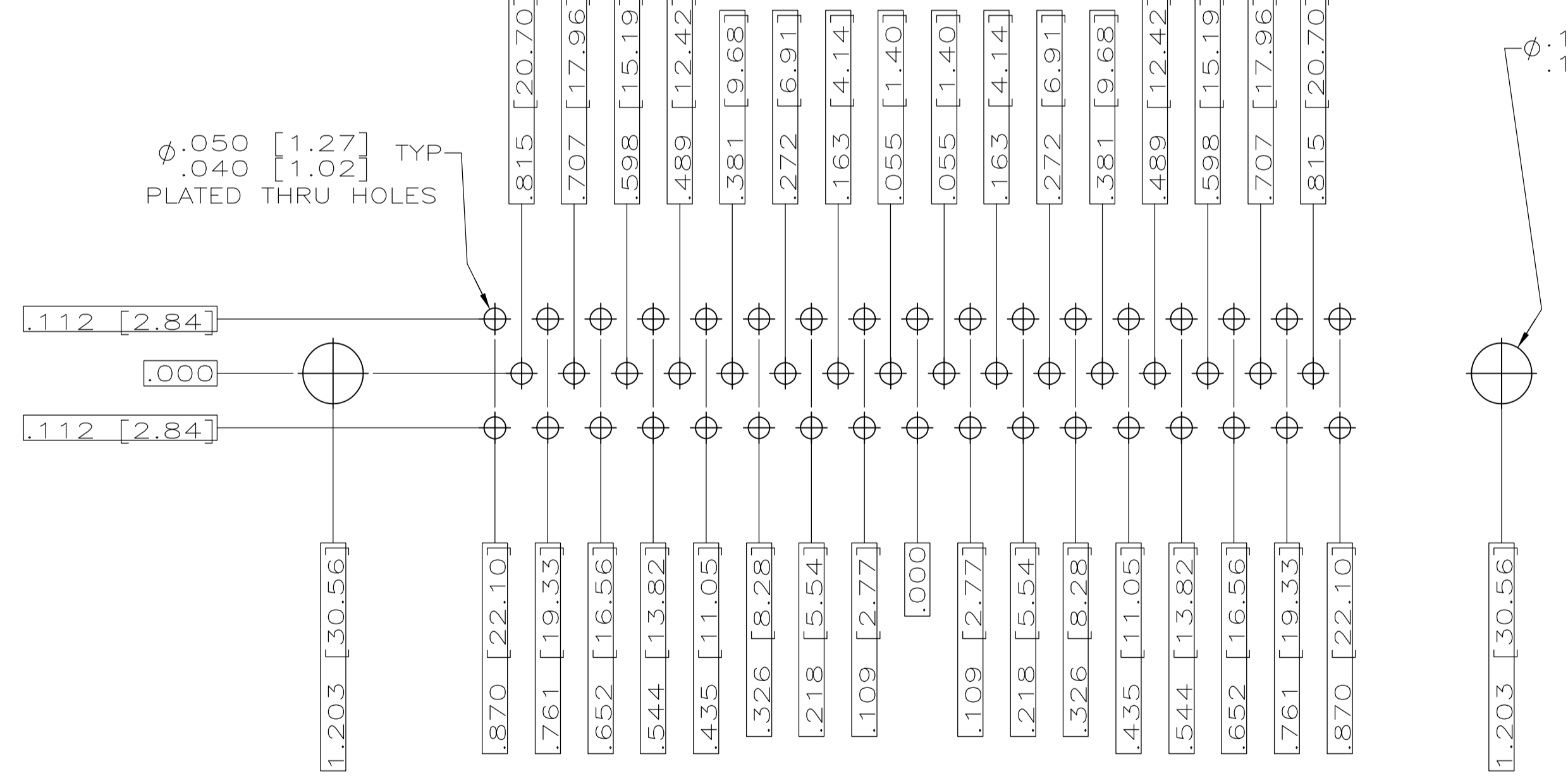
RECOMMENDED P.C. BOARD LAYOUT  
SHELL SIZE 2 (15 POSITION) ⚠



RECOMMENDED P.C. BOARD LAYOUT  
SHELL SIZE 3 (25 POSITION) ⚠



RECOMMENDED P.C. BOARD LAYOUT  
SHELL SIZE 4 (37 POSITION) ⚠



RECOMMENDED P.C. BOARD LAYOUT  
SHELL SIZE 5 (50 POSITION) ⚠

THIS DRAWING IS A CONTROLLED DOCUMENT.		DIN	9-16-99	Tyco Electronics Corporation Harrisburg, PA 17105-3608
DIMENSIONS: INCHES		CHK	9-21-99	
TOLERANCES UNLESS OTHERWISE SPECIFIED:		APVD	9-21-99	NAME AMPLIMITE PLUG ASSY, LOW PROFILE SIZE 20 POSTED P.C. BOARD CONTACTS, SERIES 109, SIZE 1 THRU 5
0 PLC 1 PLC 2 PLC 3 PLC 4 PLC ANGLES		NAME	9-21-99	
MATERIAL		SIZE	A1	CUSTOMER DRAWING
FINISH		SCALE	4:1	
		DRAWING NO.	00779	SHEET 2 OF 2
		REV	1218379	